

Lannon PIM Exhibit Descriptions

The Village is undertaking a planning study to establish a design direction for the future of the Lannon downtown area, address the aging facilities at Joeck's Memorial Park, and improve walkability of the village along with beautification elements and pedestrian amenities. A set of preliminary character image exhibits have been prepared to stimulate discussion and idea generation. The Village is seeking input on these ideas and is looking for your creative thoughts as the process begins. A consultant, Parkitecture + Planning has been retained to help facilitate the process and will be available for discussion at a public listening session on Monday, July 24th at 6PM in the Village Hall. Please join us and discuss the future potential for downtown Lannon. This is the first step in the process that will span several months to evolve. The goal and timeline of the project is to collect input, develop a roadmap for the future by the end of 2023, and begin budgeting for improvements in the following years.

File: P:\23.012 Lannon Downtown Planning\CAD\F - Images.dwg Layout: C001 User: Blake Thraesen Plotted: Jun 11, 2023 - 11:43pm



WATER ELEMENT



UNIQUE PLAYSCAPES



GAME PLAY

Revisions:

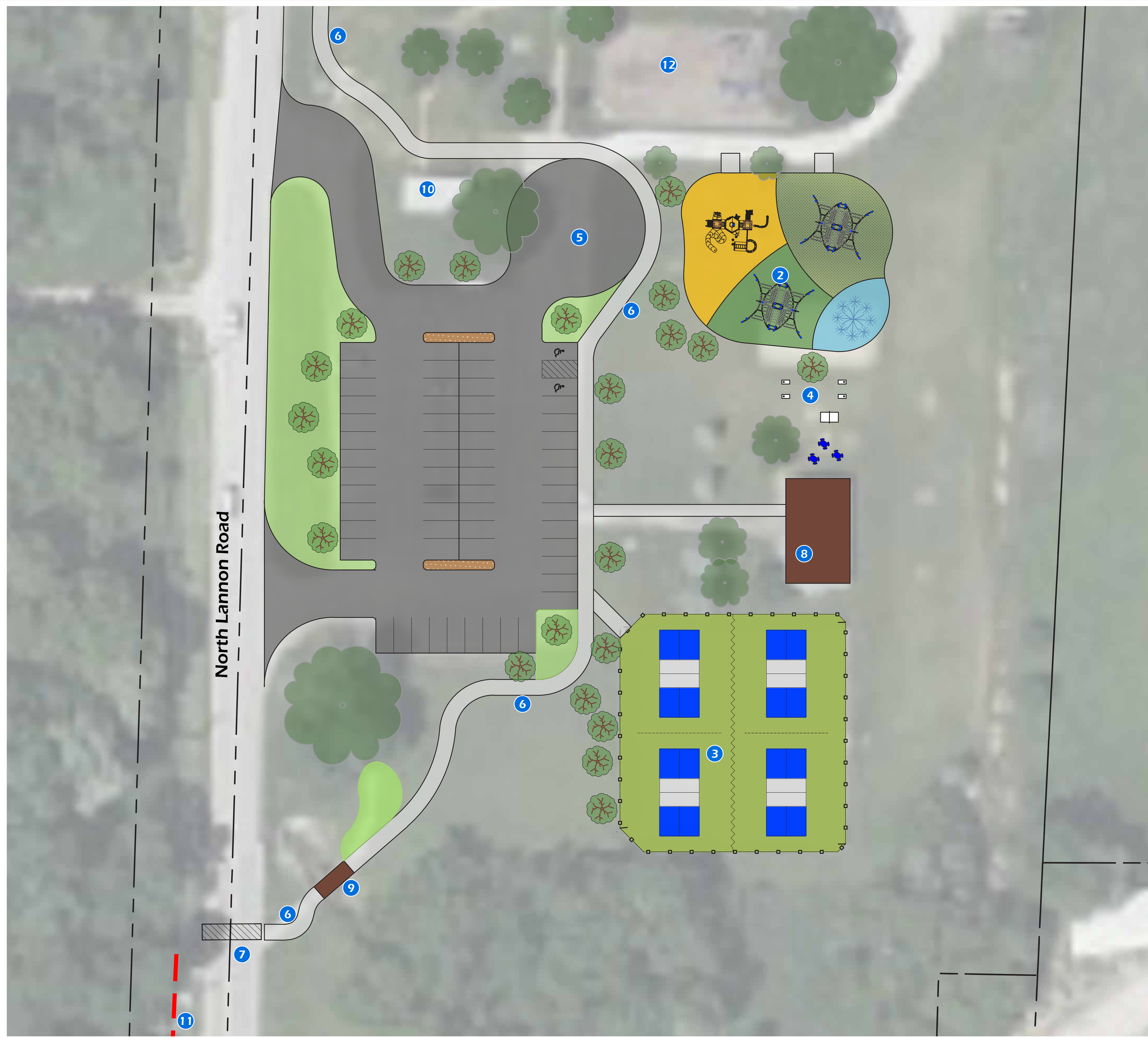
Project #: 23.012
Issued For: Review
Date: 6/12/2023

Sheet Number

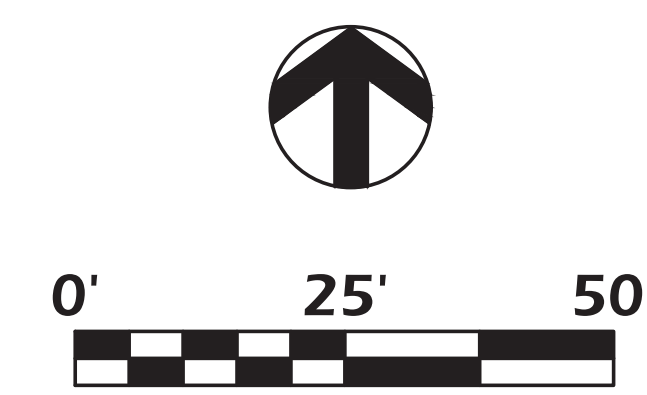
C001

Exhibit C001 depicts possible new improvements for Joecks Memorial Park. Ideas range from a small water feature, to an enhanced playscape including unique features such as climbers, challenge course (for kids and adults), and ADA accessible features. Repurposed use of the aged basketball courts could become pickleball which is one of the fastest growing sports in the United States. Inclusion of family game areas adjacent to the picnic shelter could allow for additional socialization and family friendly amenities. These ideas are graphically depicted on the preliminary park concept plan (Exhibit C100).

File: I:\23.012 Lannon Downtown Planning\CAD\LW.dwg Layout: Layout1 User: Blake Plotted: Jul 07, 2023 - 2:01pm



- LEGEND**
- 1 Parking Lot Reconfiguration (60)
 - 2 Expanded Play Area - Wet & Dry
 - 3 Pickleball Courts (4)
 - 4 Yard Games and Expanded Picnic
 - 5 Drop Off Area
 - 6 Multi-Use Paved Path
 - 7 Roadway Crossing to Bugline
 - 8 Existing Shelter
 - 9 Existing Bridge
 - 10 Existing Utility Building
 - 11 Existing Connection to Bugline
 - 12 Existing Playground



Project Name:
VILLAGE OF LANNON CORRIDOR STUDY
LANNON, WI 53046

Sheet Title:
CONCEPTUAL PLAN - JOECKS MEMORIAL PARK

Revisions:

Project #: 23.012
 Issued For: Review
 Date: 6/12/2023

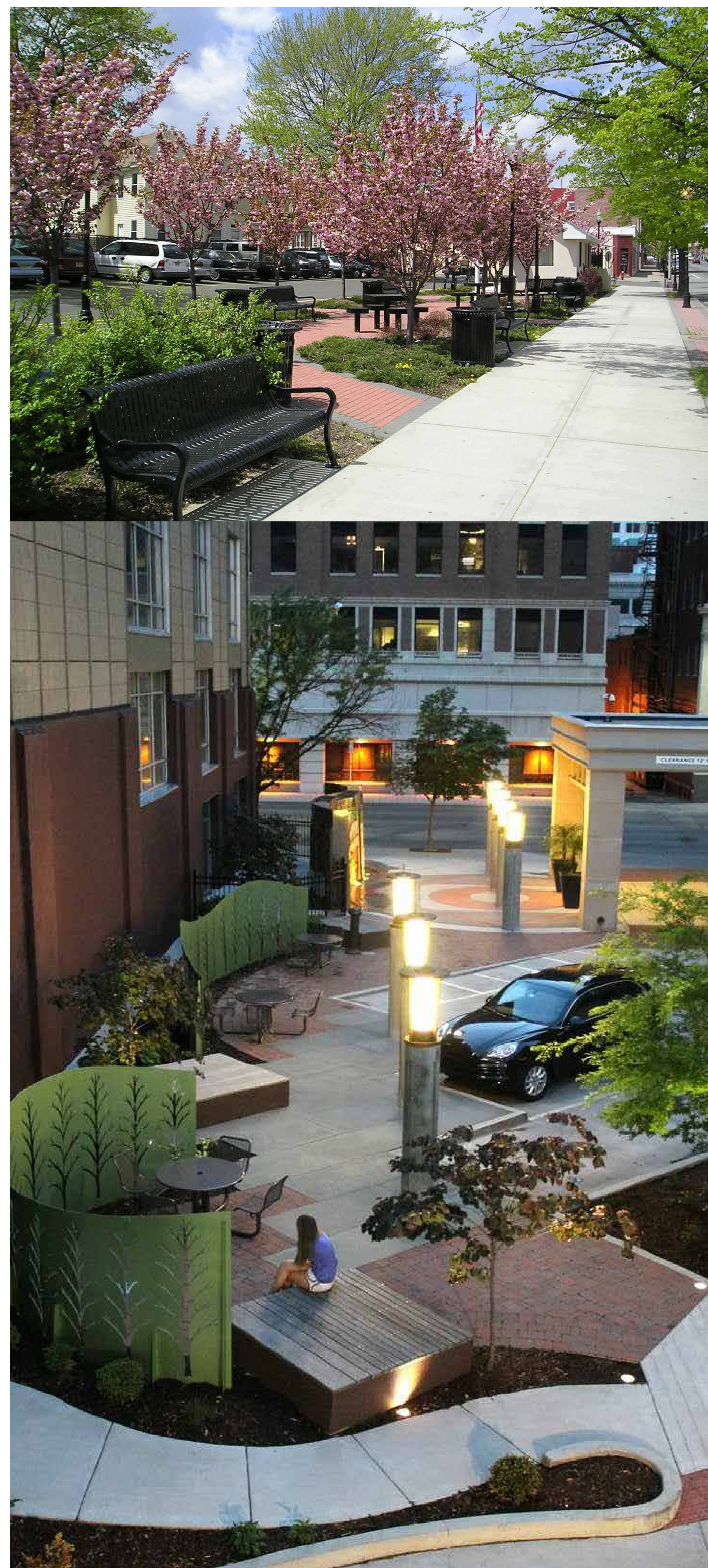
Sheet Number
C100

Exhibit C100 illustrates a potential reconfiguration and formalization of the parking and access ways at Joecks Memorial Park. The consultant is in discussion with Waukesha County in preparation for installation of a formal crossing of North Lannon Road which will provide access to the Bug Line Trail. This trail connection will continue through the park to the north parking areas and new restroom building. An expanded playground will compliment the existing play features and provide new forms of play and exercise for both children and adults. See Exhibit C001 for potential imagery). 4 new pickleball courts are proposed to replace the failing basketball court pavement and will provide a new type of recreation amenity for Village residents. A yard game area/social lawn is proposed north of the existing picnic shelter to enhance family gatherings and promote more social interaction.

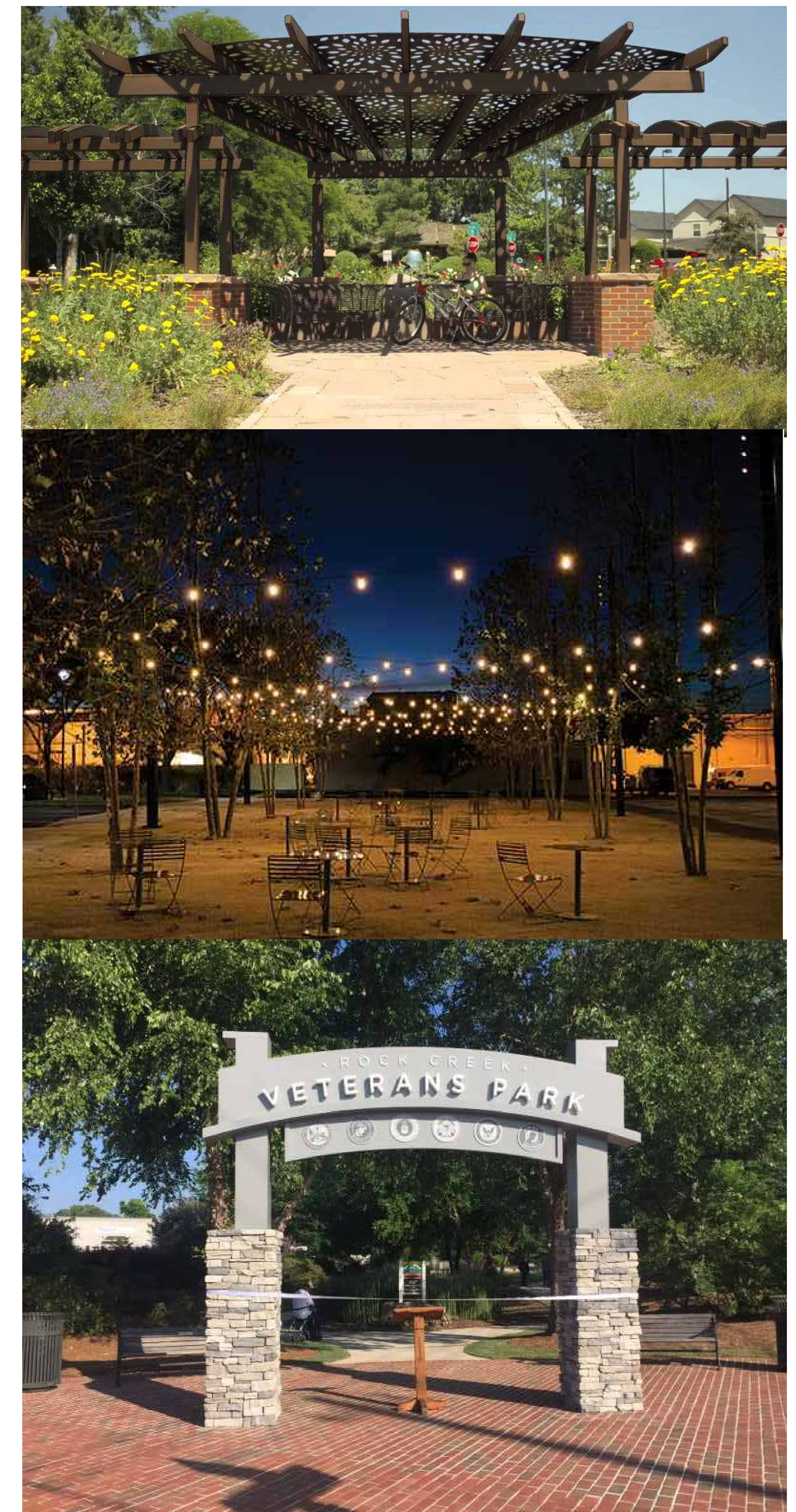
File: P:\23.012 Lannon Downtown Planning\CAD\F - Images.dwg Layout: C002 User: Blake Thraesen Plotted: Jun 11, 2023 - 11:43pm



NOOK SEATING AND ACTIVITY NODES



TREE AND MATERIAL USE



STRUCTURE AND LIGHTING

Exhibit C002 focuses on creation of a new pocket park within the downtown corridor. This area will be accessible from West Main Street and provide a new opportunity for small group gathering, special event programming, and more. The pocket park is envisioned to have seating areas, festive lighting, art installations, creative use of landscaping for shade and framing of the space, a potential small shelter or covered area, and signage. The use of materials native to the Lannon history such as stone, weathered steel, and rustic timber are being explored.



ENTRY FEATURE



STONE WALLS



METAL FENCING AND FURNITURE

Revisions:

--	--

Project #: 23.012
Issued For: Review
Date: 6/12/2023

Sheet Number

C003

File: P:\23.012 Lannon_Downtown_Planning\CAD\F - Images.dwg Layout: C003 User: Blake Thraesen Plotted: Jun 11, 2023 - 11:43pm

Exhibit C003 includes imagery illustrating proposed material usage in a new gateway/entry feature along West Main Street. This could include new landscaped islands, archway sign, water or fire feature, Lannon Stone walls, etc. Consistency in the usage of material such as metal fencing, railings, site furniture, etc is also important for continuity within the downtown corridor.

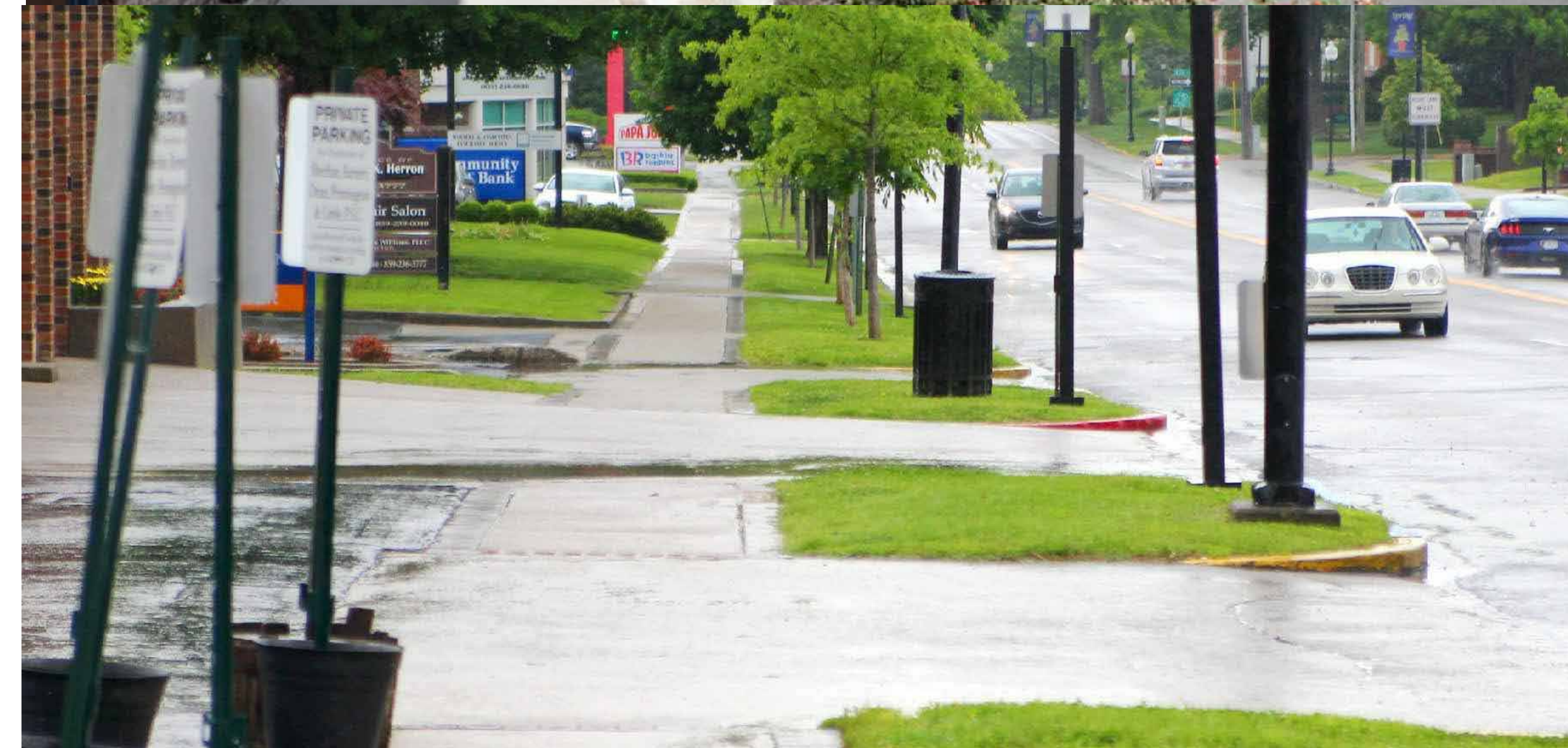
File: P:\23.012 Lannon Downtown Planning\CAD\P - Images.dwg Layout: C004 User: Blake Thraesen Plotted: Jun 11, 2023 - 11:42pm



BUMPOUTS



SEATING POCKETS



SIDEWALK MATERIALS

Revisions:

Project #: 23.012
Issued For: Review
Date: 6/12/2023

Sheet Number

C004

Exhibit C004 provides graphic examples of potential streetscape improvements for consideration along the corridor. Bump outs in the roadway provide safer pedestrian crossing points and offer opportunity for public seating, landscaping, and lighting. Additional seating nodes could be located along the roadway corridor providing spaces for small gather, rest, and general aesthetic improvements. These types of amenities often encourage shoppers and out of town visitors to spend more time in a business district than if otherwise absent. Construction materials for sidewalks, browsing zones, and crosswalks could be explored to enhance the visual interest of the corridor and help to define usage patterns.

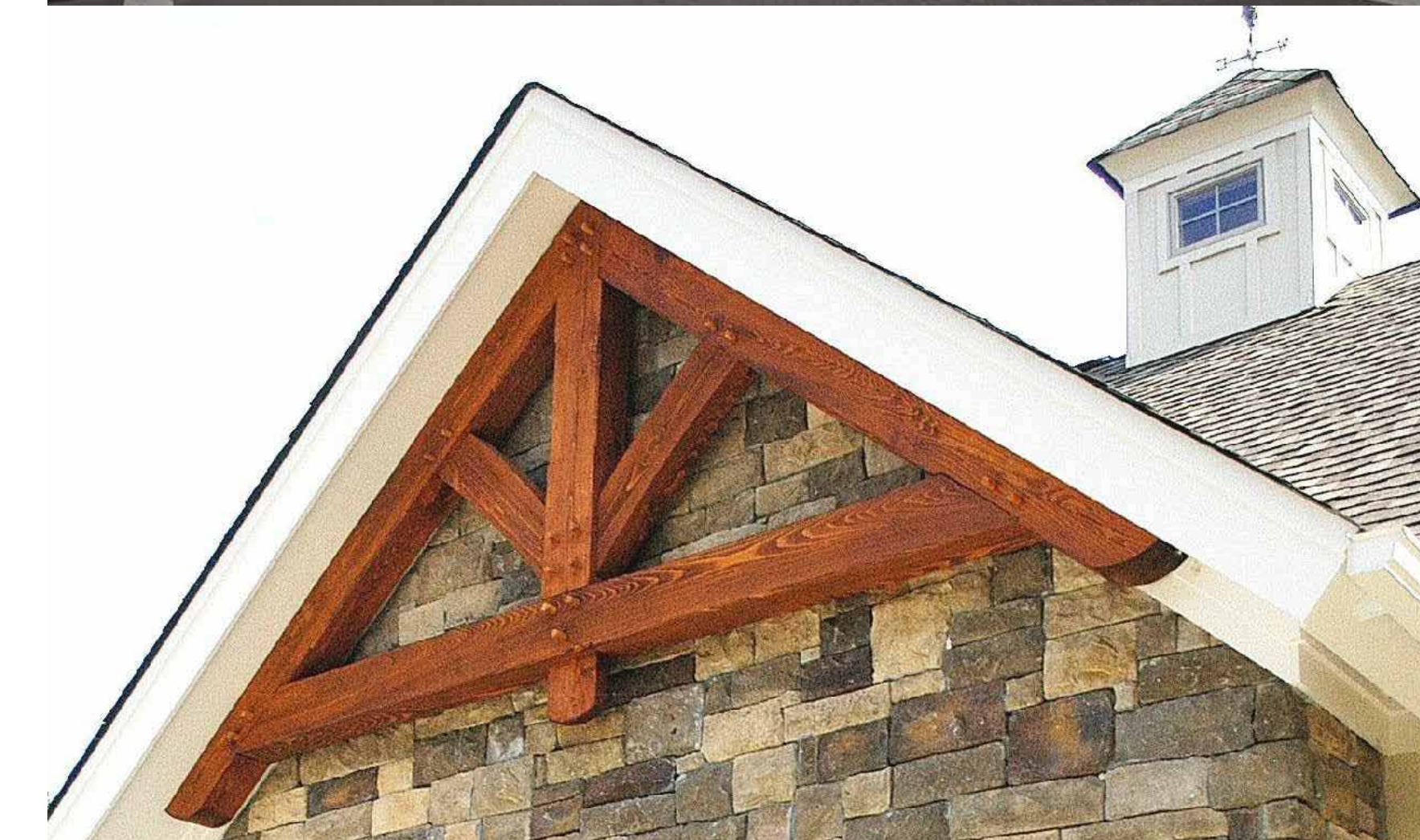
File: V:\23.012 Lannon Downtown Planning\CAD\P - Images.dwg Layout: C005 User: Blake Plotfile: Jul 05, 2023 - 5:32pm



BUILDING FACADE ARTICULATION AND AWNINGS



BUILDING MATERIALS AND ACCENTS



BUILDING SIGNAGE AND DETAILING

Project Name:

Revisions:

Project #: 23.012
 Issued For: Review
 Date: 6/12/2023

Sheet Number

C005

Exhibit C005 endeavors to illustrate potential opportunities for building façade improvements and to establish design guidelines for future development projects within the corridor. Articulation of building elevations, colors, and heights can provide great interest in a downtown district. The use of awnings and other projections from a building face also help to define entry points, and accent important architectural statements. The use of natural stone materials is an important factor for inclusion in any building renovation or new construction effort. Given the strong history of stone quarrying in Lannon, highlighting this is an important architectural cue. This is not to say that all buildings should be constructed solely of stone, but tasteful accents are equally as effective. Building detailing and signage is an important piece of downtown district aesthetics. A combination of wall murals and clean and contemporary signage could provide Lannon with a fresh aesthetic and blend a nod to history while taking a step forward.